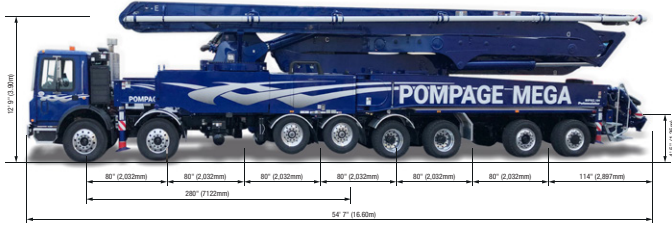
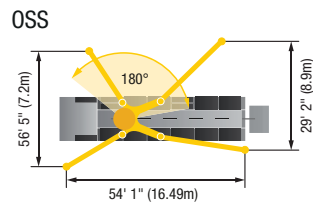
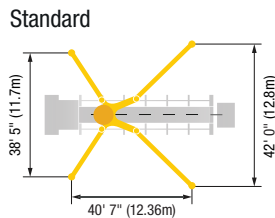
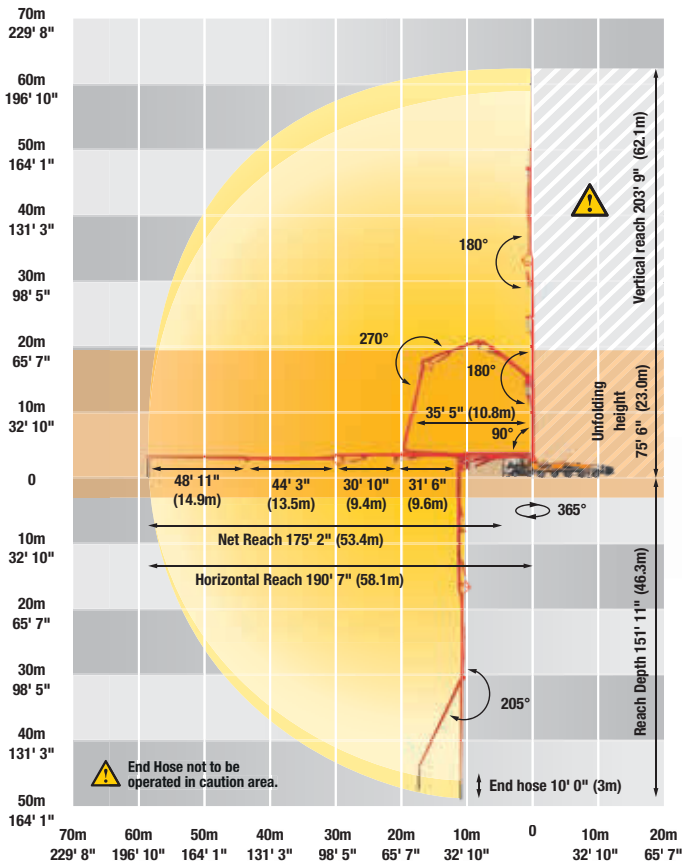


Specifications



63Z-Meter Range Diagram



63Z-Meter Truck-Mounted Specifications

Length	54' 7"	(16.6m)
Width	8' 2"	(2.5m)
Height	12' 9"	(3.9m)
Wheelbase	280"	(7,12mm)
Front axle weight	54,887lbs	(24,897kg)
Rear axle weight	73,713 lbs	(33,436kg)
Approx total weight	128,600 lbs	(58,333kg)

Based on Model MACK MRU 613 with .16H pump cell.
Weights are approximate and include pump, boom, truck, driver and full fuel tank.
Varies with options selected.
Dimensions will vary with different truck makes, models and specifications.

Boom Specifications | Z-Fold Design

Height & Reach		
Vertical reach	203' 9"	(62.1m)
Horizontal reach	190' 7"	(58.1m)
Reach from front of truck*	175' 2"	(53.4m)
Reach depth	151' 11"	(46.3m)
Unfolding height	75' 6"	(23.0m)

5-Section Boom

1st section articulation	90°	
2nd section articulation	180°	
3rd section articulation	180°	
4th section articulation	270°	
5th section articulation	205°	
Section Lengths		
1st section length	35' 5"	(10.8m)
2nd section length	31' 6"	(9.6m)
3rd section length	30' 10"	(9.4m)
4th section length	44' 3"	(13.5m)
5th section length	48' 11"	(14.9m)

General Specifications

Pipeline Size (ID) metric ends	5"	(125mm)
Rotation	365°	
End hose — length	10' 0"	(3.0m)
End hose — diameter	5"	(125mm)
Outrigger spread L-R — front	38' 5"	(11.7m)
hydraulically swing out, telescope out and extend down		
Outrigger spread L-R — rear	42' 0"	(12.8m)
hydraulically swing out & extend down		

Pump Specifications

	63Z.16H	63Z.18H LS
Output — rod side	210 yd ³ /hr (160m ³ /hr)	—
Output — piston side	141 yd ³ /hr (108m ³ /hr)	238 yd ³ /hr (182m ³ /hr)
Pressure — rod side	1,233 psi (85 bar)	—
Pressure — piston side	1,885 psi (130 bar)•	1,233 psi (85 bar)•
Material cylinder diameter	9" (230mm)	10" (250mm)
Stroke length	83" (2,100mm)	83" (2,100mm)
Maximum strokes per minute		
— rod side	31	—
— piston side	21	29
Volume control	0-Full	0-Full
Vibrator	Standard	Standard
Hard-chromed material cylinders	Standard	Standard
Hydraulic system	Free Flow	Free Flow
Hydraulic system pressure	5,075 psi (350 bar)	5,075 psi (350 bar)
Differential cylinder diameter	5.5" (140mm)	5.5" (140mm)
Rod diameter	3.1" (80mm)	3.1" (80mm)
Maximum size aggregate	2.5" (63mm)	2.5" (63mm)
Water tank — pedestal	206 gal (780L)	206 gal (780L)

Maximum theoretical values listed.
* Applies to units mounted on PMA stock truck — MACK MRU 613
• Standard delivery line system rated at max line pressure of 1,233 psi (85 bar)



STE-JULIE
2250 Rue Bombardier
Ste-Julie, Québec, Canada
J3E 2J9
Tel : (450) 922-6342

**STE-JULIE • BLAINVILLE
DRUMMONDVILLE • OTTAWA**

information@pompemega.com
pompemega.com