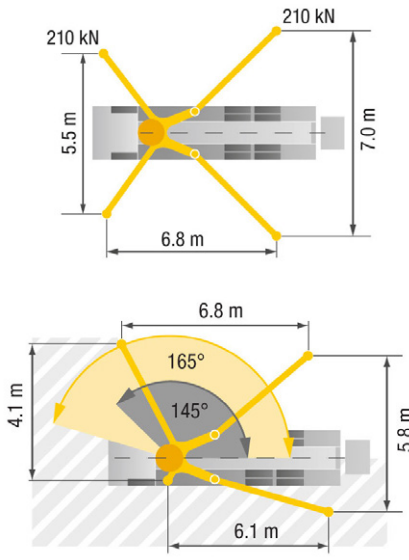
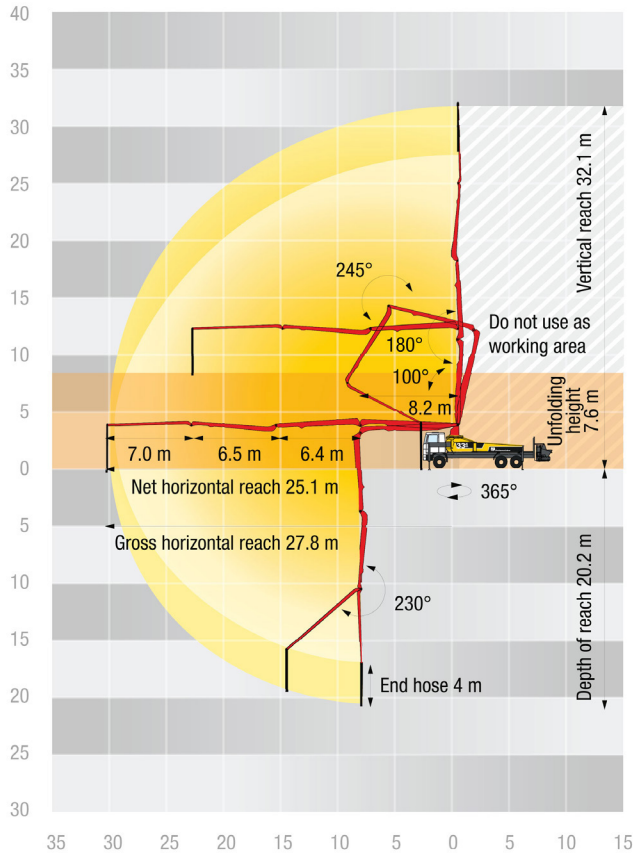


# SPECIFICATIONS



## 33Z-METER TRUCK-MOUNTED SPECIFICATIONS

|                      |            |            |
|----------------------|------------|------------|
| Length               | 35' 6"     | (10.84m)   |
| Width                | 8' 2"      | (2.50m)    |
| Height               | 12' 10"    | (3.92m)    |
| Wheelbase            | 233"       | (5664mm)   |
| Front Axle Weight    | 18,640 lbs | (8,455kg)  |
| Approx. Total Weight | 51,474 lbs | (23,348kg) |

Based on Model Mack TERRAPRO 613 (MRU) with .16H pump cell.  
Weights are approximate and include pump, boom, truck, driver and some fuel. Varies with options selected.  
Dimensions will vary with different truck makes, models and specifications.

## BOOM SPECIFICATIONS | Z-FOLD DESIGN

|                                |         |         |
|--------------------------------|---------|---------|
| <b>Height &amp; Reach</b>      |         |         |
| Vertical Reach                 | 105' 3" | (32.1m) |
| Horizontal Reach               | 100' 0" | (30.5m) |
| Reach from Front of Truck*     | 91' 2"  | (27.8m) |
| Reach Depth                    | 67' 10" | (20.2m) |
| Unfolding Height               | 24' 11" | (7.6m)  |
| <b>4-Section Boom</b>          |         |         |
| 1st section rotation           | 100°    |         |
| 2nd section rotation           | 180°    |         |
| 3rd section rotation           | 245°    |         |
| 4th section rotation           | 230°    |         |
| 1st section length             | 26' 10" | (8.2m)  |
| 2nd section length             | 20' 11" | (6.4m)  |
| 3rd section length             | 21' 3"  | (6.5m)  |
| 4th section length             | 22' 11" | (7.0m)  |
| <b>General Specs</b>           |         |         |
| Pipeline Size (ID) metric ends | 5"      | (125mm) |
| Rotation                       | 365°    |         |
| End Hose - length              | 10' 0"  | (3.0m)  |
| End Hose - diameter            | 5"      | (125mm) |

## OUTRIGGER SPECIFICATIONS

|   |         |        |
|---|---------|--------|
| Front Outrigger Spread L - R — hydraulically extend out & down      | 18' 0"  | (5.5m) |
| Rear Outrigger Spread L - R — hydraulically swing out & extend down | 22' 11" | (7.0m) |

## PUMP SPECIFICATIONS

|  | 33Z.12H   | 33Z.16H   |
|--|---|---|
| Output – rod side                      | 144 yd <sup>3</sup> /hr (110m <sup>3</sup> /hr) | 209 yd <sup>3</sup> /hr (160m <sup>3</sup> /hr) |
| – piston side                          | 97 yd <sup>3</sup> /hr (74m <sup>3</sup> /hr)   | 141 yd <sup>3</sup> /hr (108m <sup>3</sup> /hr) |
| Pressure – rod side                    | 1,233 psi (85 bar)                              | 1,233 psi (85 bar)                              |
| – piston side                          | 1,885 psi (130 bar)•                            | 1,885 psi (130 bar)•                            |
| Material Cylinder Diameter             | 9"  | (230mm)   |
| Stroke Length                          | 83" (2100mm)                                    | 83" (2100mm)                                    |
| Maximum Strokes / Minute – rod side    | 21  | 31  |
| Maximum Strokes / Minute – piston side | 14  | 21  |
| Volume Control                         | 0-Full  | 0-Full  |
| Vibrator                               | Standard  | Standard  |
| Hard-chromed Material Cylinders        | Standard  | Standard  |
| Hydraulic System                       | Free Flow                                       | Free Flow                                       |
| Hydraulic System Pressure              | 5,075 psi (350 bar)                             | 5,075 psi (350 bar)                             |
| Differential Cylinder Diameter         | 5.5" (140mm)                                    | 5.5" (140mm)                                    |
| Rod Diameter                           | 3.1" (80mm)                                     | 3.1" (80mm)                                     |
| Maximum Size Aggregate                 | 2.5" (63mm)                                     | 2.5" (63mm)                                     |
| Water Tank — pedestal                  | 185 gal (700L)                                  | 185 gal (700L)                                  |

Maximum theoretical values listed.  
\* Applies to units mounted on PMA stock truck — Mack MRU 613.  
• Standard delivery line system rated at max line pressure of 1,233 psi (85 bar)  
• Ergonic Pump System (EPS) is standard.