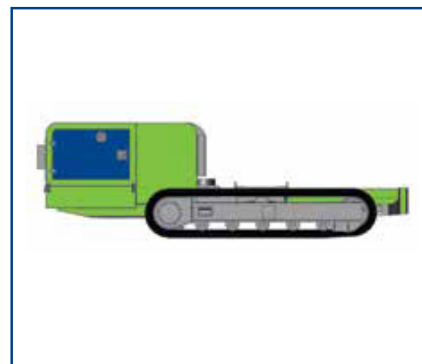
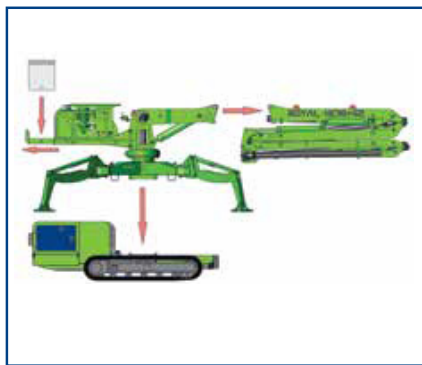
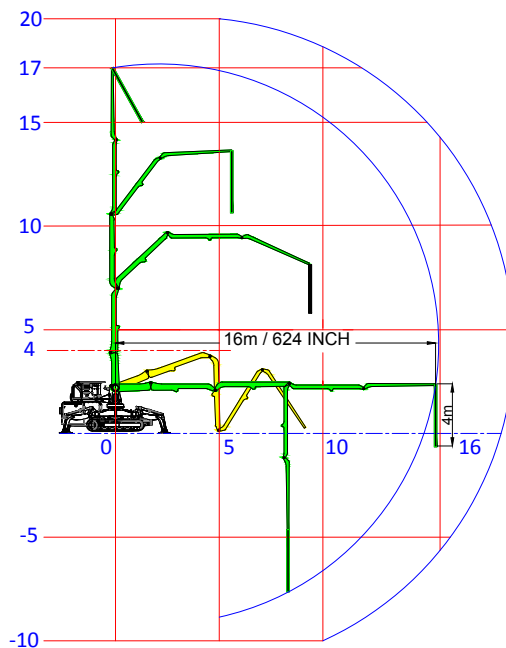
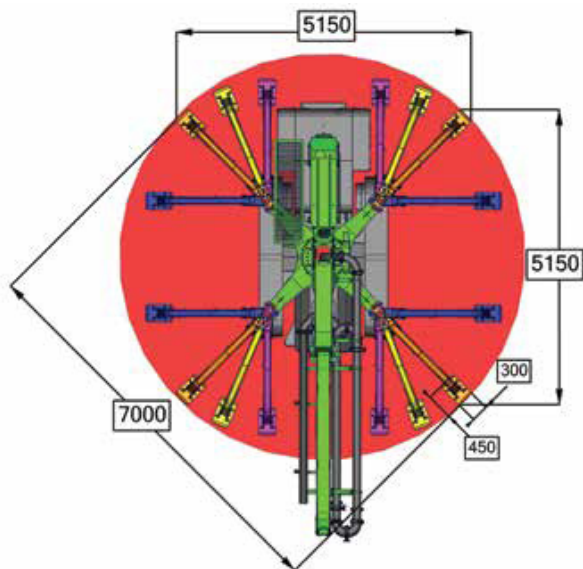


# SPECIFICATIONS



Ballast Weight: 1600 KG - 3500 LBS  
Machine Weight: 4400 KG - 9800 LBS

Total Weight: 8200 KG / 18000 LBS

Under Carriage Weight: 3800 KG / 8400 LBS

**MEGA**  
POMPAGE DE BÉTON

**STE-JULIE**  
2250 Rue Bombardier  
Ste-Julie, Québec, Canada  
J3E 2J9  
Tel : (450) 922-6342

MONTRÉAL • RIVE-NORD / RIVE-SUD  
OTTAWA  
[information@pompemega.com](mailto:information@pompemega.com)  
[pompemega.com](http://pompemega.com)