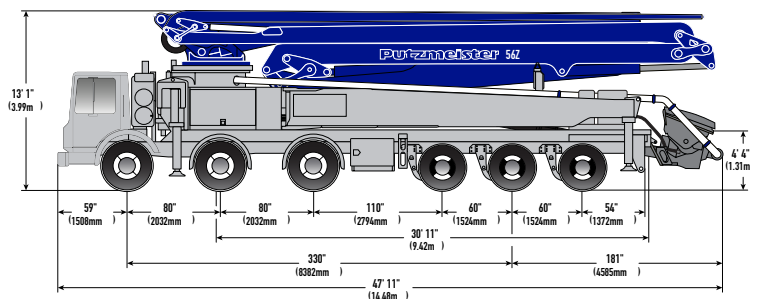


SPECIFICATIONS

56Z



56Z-METER TRUCK-MOUNTED SPECIFICATIONS

Length	47' 11"	(14.48m)
Width	8' 2"	(2.50m)
Height	13' 1"	(3.99m)
Wheelbase	330"	(8,382mm)
Front axle weight	52,773 lbs	(23,938kg)
Rear axle weight	48,747 lbs	(22,111kg)
Approx total weight	100,080 lbs	(45,396kg)

Based on Model MACK MRU 613 with .16H pump cell.

Weights are approximate and include pump, boom, truck, driver and full fuel. Varies with options selected. Dimensions will vary with different truck makes, models and specifications.

BOOMSPECIFICATIONS Z-FOLD DESIGN

Height & Reach

Vertical reach	180' 10"	(55.12m)
Horizontal reach	163' 10"	(49.94m)
Reach from front of truck*	152' 6"	(46.48m)
Reach depth	132' 3"	(40.30m)
Unfolding height	51' 3"	(15.62m)

5-Section Boom

1st section articulation	90°	
2nd section articulation	180°	
3rd section articulation	180°	
4th section articulation	245°	
5th section articulation	210°	
1st section length	34' 1"	(10.40m)
2nd section length	26' 8"	(8.12m)
3rd section length	30' 6"	(9.30m)
4th section length	37' 8"	(11.48m)
5th section length	38' 9"	(11.80m)

General Specs

Pipeline Size (ID) metric ends	5"	(125mm)
Rotation	365°	
End hose— length	10' 0"	(3.00m)
End hose — diameter	5"	(125mm)
Outrigger spread L - R — front	30' 6"	(9.30m)
hydraulically extend out & down		
Outrigger spread L - R — rear	40' 2"	(12.30m)
hydraulically swing out & extend down		

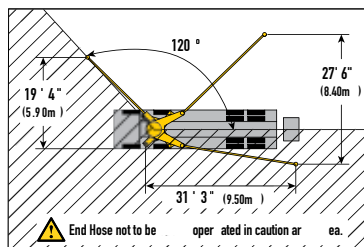
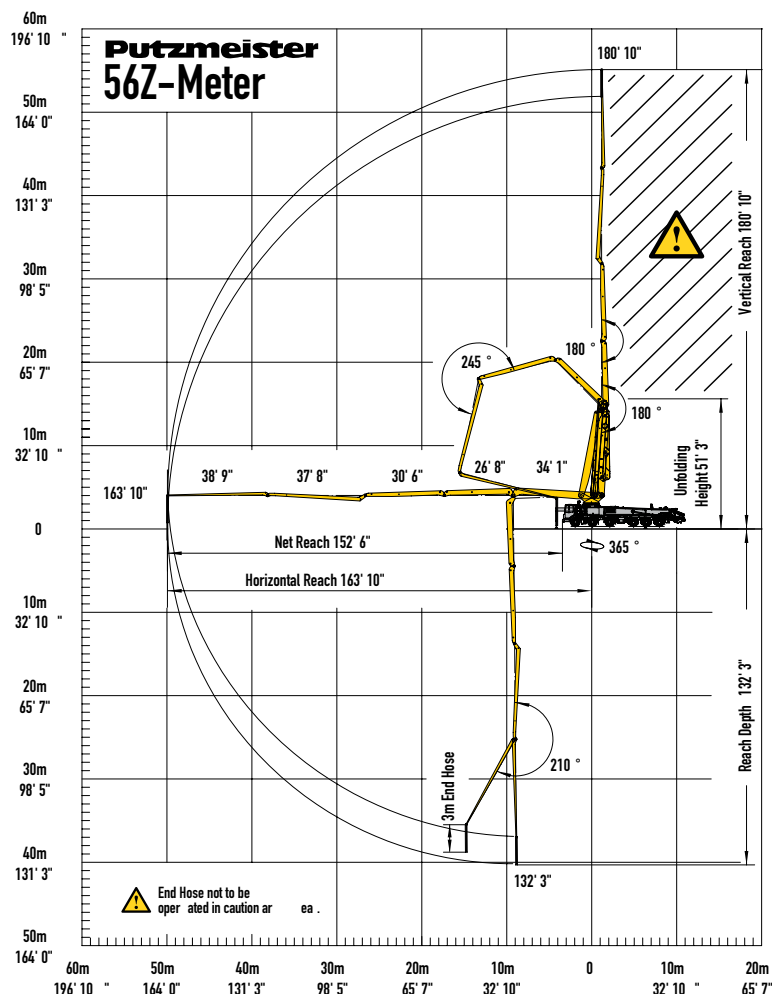
PUMP SPECIFICATIONS

	56Z.16H	56Z.16H LS
Output — rod side	210 yd ³ /hr (160m ³ /hr)	—
— piston side	146 yd ³ /hr (112m ³ /hr)	210 yd ³ /hr (160m ³ /hr)
Pressure — rod side	1,233 psi (85 bar)	—
— piston side	1,885 psi (130 bar)	1,233 psi (85 bar)
Material cylinder diameter	9" (230mm)	10" (250mm)
Stroke length	83" (2,100mm)	83" (2,100mm)
Maximum strokes per minute		
— rod side	31	—
— piston side	21	26
Volume control	0-Full	0-Full
Vibrator	Standard	Standard
Hard-chromed material cylinders	Standard	Standard
Hydraulic system	Free Flow	Free Flow
Hydraulic system pressure	5,075 psi (350 bar)	5,075 psi (350 bar)
Differential cylinder diameter	5.5" (140mm)	5.5" (140mm)
Rod diameter	3.1" (80mm)	3.1" (80mm)
Maximum size aggregate	2.5" (63mm)	2.5" (63mm)
Water tank — pedestal	185 gal (700L)	185 gal (700L)

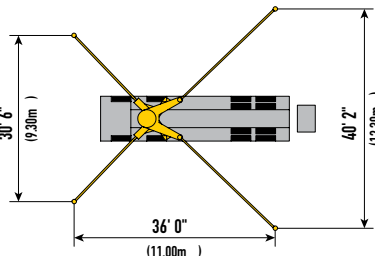
Maximum theoretical values listed.

* Applies to units mounted on PMA stock truck — MACK MRU 613

• Standard delivery line system rated at max line pressure of 1,233 psi (85 bar)



With one-sided support (OSS) 120°



MEGA
POMPAGE DE BÉTON

STE-JULIE
2250 Rue Bombardier
Ste-Julie, Québec, Canada
J3E 2J9
Tel : (450) 922-6342

MONTRÉAL • RIVE-NORD / RIVE-SUD
OTTAWA

information@pompesmega.com
pompagemega.com